

Temperature Recorders

The global cold chain presents a number of risks to your product. Every link in the supply chain is crucial to product quality. Monitoring your products provides information necessary to make critical decisions.



LOG•IC® Temperature Recorders

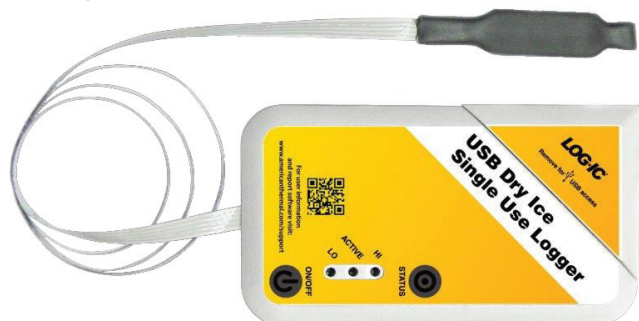
Refrigeration equipment is not always reliable. Multiple handlers may come in contact with the package during its journey. Unexpected delays and neglect at any stage of production or distribution can cause exposure to unacceptable temperatures. These types of risks may occur in storage before the product leaves a facility, in transit or after it arrives at its destination. How you can be sure that a cold chain breach has not compromised your product's quality?

LOG•IC is a cost-effective temperature recorder that indicates if your product has been exposed to temperatures that could negatively affect product quality or safety. While many other temperature recorders limit you to one download before stopping the recording process, LOG•IC allows you to scan and view tag data repeatedly, allowing you to take measurements at any point in the cold chain.

LOG•IC can be tailored for specific applications such as monitoring product core temperatures with a stainless steel probe, or inside validated packaging with a ribbon cable, or extreme cold with a dry ice solution.

Features

- Captures data every 60 seconds
- Up to eight temperature alarm thresholds
- Validated and FDA 21 CFR Part 11-compliant reports
- Up to 255 uses per device
- Available with Stainless and Ribbon Probes



Dry Ice Single Use
w/ Ribbon Probe



LOG•IC
Single-Use

LOG•IC
Multi-Use

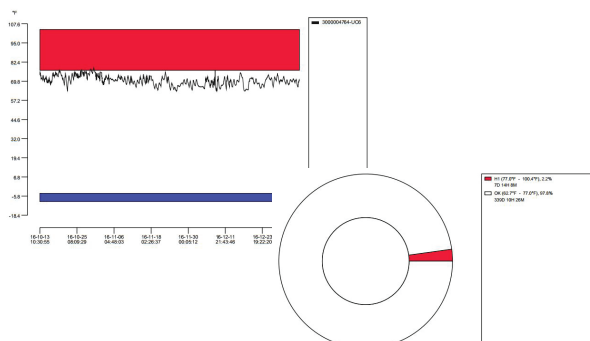
LOG•IC
255 Use

Temperature Recorders

Key Specifications

| | Standard | with Probe | Dry Ice Probe |
|--------------------------------------|---|---------------------------------|--|
| Temperature Measurement Range | | -30°C to 75°C -22°F to 167°F | -80°C to 75°C -112°F to 167°F |
| Temperature Accuracy: | | | |
| -80°C to -30°C | N/A | N/A | ± 3°C |
| -30°C to 2°C | ± 0.5°C | ± 1°C | ± 1°C |
| 2°C to 8°C | ± 0.5°C | ± 0.5°C | ± 1°C |
| 8°C to 75°C | ± 0.5°C | ± 1°C | ± 1°C |
| -112°F to -22°F | N/A | N/A | ± 6°F |
| 22°F to 36°F | ± 1°F | ± 2°F | ± 2°F |
| 36°F to 46°F | ± 1°F | ± 1°F | ± 2°F |
| 46°F to 167°F | ± 1°F | ± 2°F | ± 2°F |
| Threshold Settings | 8 configurable excursions thresholds | | |
| Memory Capacity | 4000 logged data points / 16 million histogram temperature readings | | |
| Data Retrieval | USB plus RF | | |
| Wireless Technology | Semi-passive RFID | | |
| Packaging | NEMA 4 / IP 66 | | |
| Product Size | 3.5in x 1.75in x 0.25in 9cm x 5cm x 0.82cm | | 2.28in x 2.28in x 0.07in 5.79cm x 5.79cm x 0.17cm |
| Cable Length | N/A | 24in 60.96cm | 24in 60.96cm |
| Battery Life | Up to 3 years | | |
| Calibration | Factory-calibrated sensor, NIST-traceable (3-point) | | |
| Weight | 29g | | 19.50g |

| Product Description | Part Number |
|--|-------------|
| Single-Use Temperature Recorder | L-3100 |
| Multi-Use Temperature Recorder (26 uses) | L-3200 |
| Multi-Use Temperature Recorder / Stainless Steel Probe (26 uses) | L-3210 |
| Multi-Use Temperature Recorder / Ribbon Probe (26 uses) | L-3230 |
| Multi-Use Temperature Recorder (255 Uses) | L-3300 |



Features

- Captures data every 60 seconds
- Up to eight temperature alarm thresholds
- Validated and FDA 21 CFR Part 11-compliant reports
- Up to 255 uses per device
- Available with Stainless and Ribbon Probes