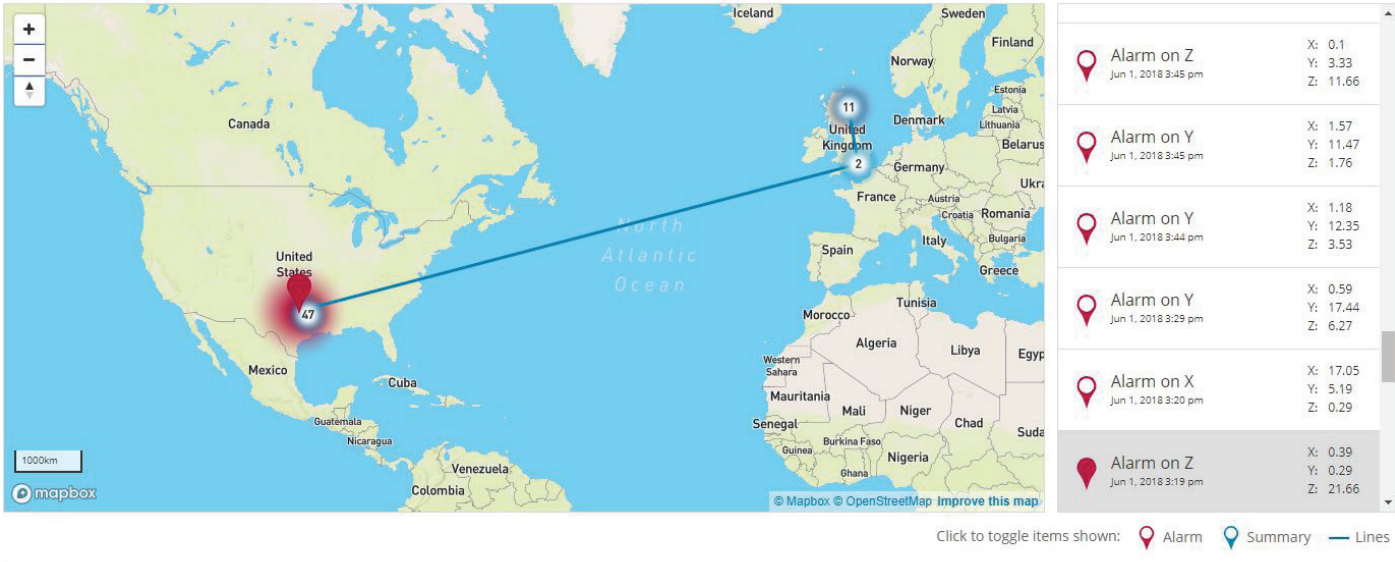




FUNCTIONAL

- Impact and temperature detection with real-time alerts of conditions outside the user defined thresholds
- Alerts via cellular communication with impact date stamp, location and temperature
- Location information and event summaries communicated from 1 to 24 hour intervals (user defined)
- Global cellular coverage via dedicated network
- Secure cloud platform
- Dashboard with unit's impact and temperature information, as well as location
- Power save mode in low connectivity/low battery situations to extend battery life



OPERATING SPECIFICATIONS

Impact Monitoring: 3-axis detection

Impact Accuracy:

Accurate up to 65G with +/- 10G variance

Impact	Full Range Accuracy	SpotBot Alarm Setting
65G to 30G	3%	30G
30G to 10G	7%	10G
10G to 4G	9%	4G

Duration of Impact: 10 to 18ms

Bandwidth: 100Hz

Temperature Monitoring:

Internal temperature sensor

Temperature Accuracy:

±2°C (-25°C to 85°C)

±3°C (-40°C to -25°C)

Operating Temperature Range:

-40°C to 85°C

-40°F to 185°F



BATTERY LIFE:

Battery Type: 1.5V AA Batteries

Lithium cells required for long battery life or low temp operation

1 (summary / event) per day	Up to 190 Days	Normal cellular coverage (Lithium batteries)
1 (summary / event) per hour	Up to 75 Days	

CASE SPECIFICATIONS

- USB 2.0 connector
- **Dimensions:** W*L*H = 7.000" x 5.250" x 1.375"
= 17.78 x 13.335 x 3.5 cm
- **Weight:** 1.304 lbs = 590 gr with batteries
1.104 lbs = 500 gr without batteries
- IP 67 Rated

MOUNTING OPTIONS

- Screw mount
- Magnet feet (optional)
- Adhesive Pads (optional)

GLOBAL CELLULAR RADIO

Global cellular 3G connectivity (internal SIM)

Bands	UMTS 800/850/900/
	AWS/1900/2100
	GSM850/900/1800/1900
Global Approvals	FCC, CE, IC, Anatel, CMIIT, Giteki, NOM/NYCE approved GCF, PTCRB
	US, EU, Canada, Japan, China, Mexico, Brazil, India, Australia
	Please inquire for additional country certification status

